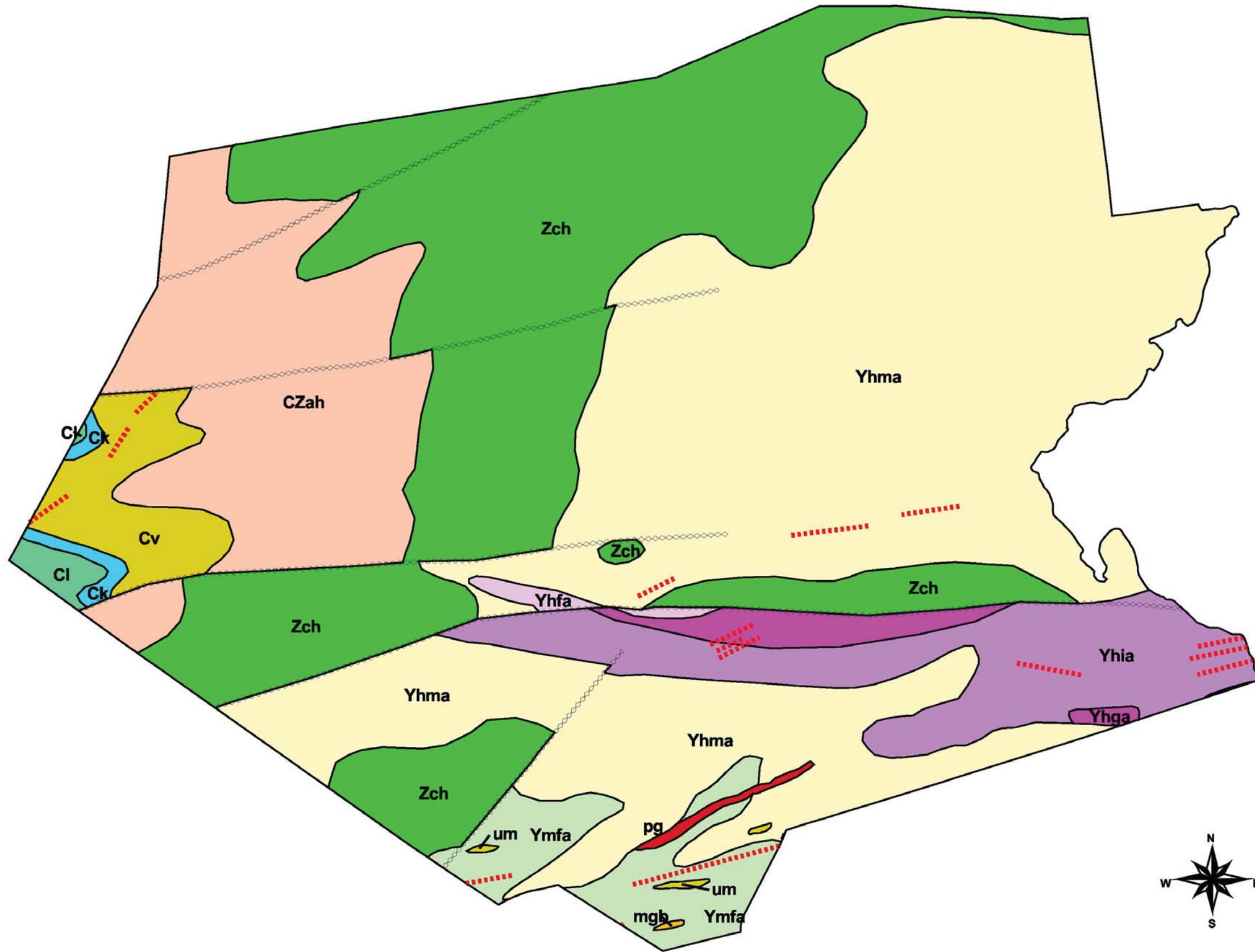


Map 4-1

Geology and Groundwater



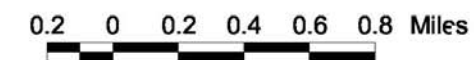
# of wells to produce 1 million gallons per day	Geologic Formations
5-20	CZah Antietam and Harpers Formations, undivided
15-40	Zch Chickies Quartzite
5-20	Ck Kinzers Limestone
1-5	Cl Ledger Dolomite
5-20	Cv Vintage Dolomite
5-20	Yhma banded mafic gneiss, amphibolite facies
5-20	Yhfa felsic gneiss, amphibolite facies
5-20	Ymfa felsic to mafic gneiss
5-15	Yhga graphitic felsic gneiss, amphibolite facies
5-20	mgb metagabbro
15-40	pg pegmatite
15-40	um ultramafite
5-20	Yhia felsic and intermediate gneiss, amphibolite facies
	--- Faults
 Dikes

Data Source:
Digital bedrock geology of Chester County, Pennsylvania. U.S. Geological Survey, 1996.

Material used in the preparation of this map has been interpreted by Chester County Planning Commission staff from preliminary data sources. The material has not been processed for quality control and is only used for draft mapping purposes. The planimetric and cadastral data on this map cannot be used for any other purpose without the express approval of the County of Chester.



1:39332



WEST CALN TOWNSHIP
Chester County, Pennsylvania

Comprehensive Plan

